

YODOCK TRAFFIC CONTROL DEVICE

MODEL 2001M

SPECIFICATIONS

INTENT: YODOCK MODEL 2001M IS A RECYCLABLE, PORTABLE ENERGY DISBURSEMENT CELL. IT IS THE INTENT OF THIS SPECIFICATION TO DESCRIBE A LIGHTWEIGHT PORTABLE PLASTIC TRAFFIC CONTROL DEVICE. THE INTENDED USE OF THE YODOCK 2001M IS TO ASSIST IN THE PREVENTION OF VEHICULAR PENETRATION OF A WORK ZONE OR GORE AREA, STREET AND ROAD CLOSURES, AS WELL AS PROVIDING CLEAR DELINEATION FOR TRAFFIC CHANNELIZATION AND PEDESTRIAN SAFETY. IF PENETRATION OF A WORK ZONE OR GORE AREA IS NEED, THE MODEL 2001M, MUST BE ACCESSORIZED WITH THE YODOCK 350 BARRIER WALL KIT.

SCOPE: THIS SPECIFICATION RECOGNIZES THE NEED FOR A LIGHTWEIGHT, PORTABLE TRAFFIC CONTROL DEVICE TO PERFORM SOME OF THE FUNCTIONS OF CONES, BARRELS, TYPE I, II, III, BARRICADES AND OTHER SUCH DEVICES USED TO CONTROL, DIRECT, CHANNEL AND STOP VEHICULAR AND PEDESTRIAN TRAFFIC FOR PURPOSES OF AIDING IN CONTAINMENT AND/OR SAFETY. IF USED AS A DIRECT REPLACEMENT FOR TEMPORARY CONCRETE BARRIER, THE 2001M MUST BE ACCESSORIZED WITH THE YODOCK 350 BARRIER WALL KIT.

CONSTRUCTION: THE 2001M IS MADE USING ROTATIONAL MOLDING TO INSURE WATERTIGHTNESS AND INTEGRITY. THE UNIT IS MANUFACTURED WITH INTERNALLY MOLDED BAFFLES IN ORDER TO MAINTAIN ITS SHAPE, BE PROPERLY SEALED AND LEAKPROOF. THE UNIT IS PROVIDED WITH DRAINPLUGS AND UNDERSIDE GROOVES TO ALLOW FLOW OF SURFACE DRAINAGE. THE DIMENSIONS OF THE UNIT ARE AS FOLLOWS:

HEIGHT: 32"
MALE CONNECTION: 5.25"
POST BOOT: 3.75 AND 2.75"

BASE WIDTH: 18"
FEMALE INDENTATION: 6"

FUNCTIONAL LENGTH: 72"
TOP FILL HOLES: 4"

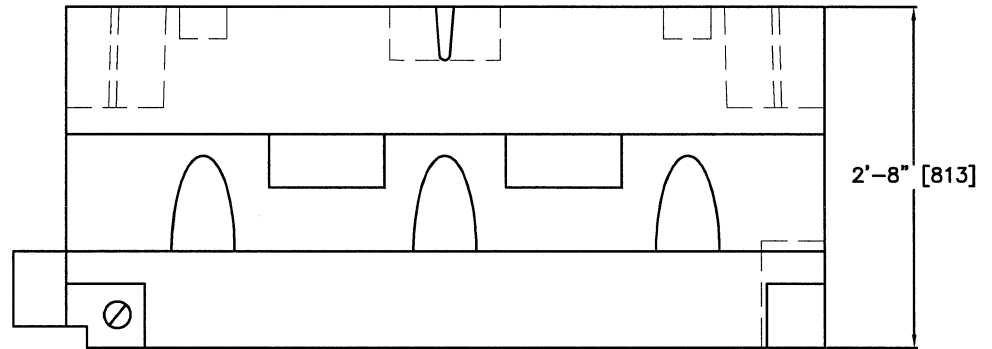
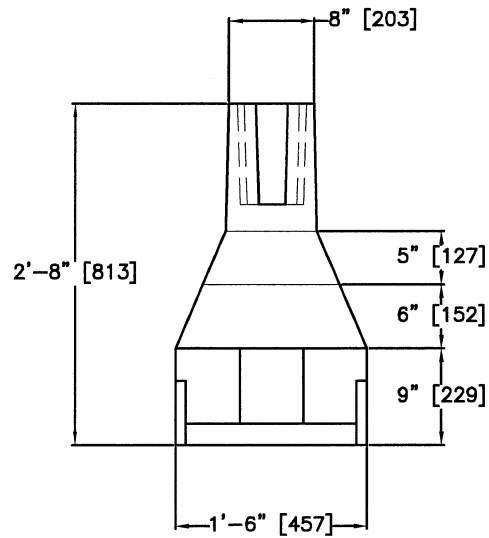
THE UNIT IS JOINED BY A UNIQUE COUPLING DEVICE THAT AIDS IN THE PREVENTION OF SEPARATION OF THE INDIVIDUAL PORTABLE ENERGY DISBURSEMENT CELL UNITS IN THE EVENT OF AN IMPACT. THE UNIT HAS PORTS DEVISED TO ALLOW FOR GROUND MOUNTING AND FORKLIFT HOLES FOR EASE OF MOBILITY WHEN FILLED.

MATERIAL: THE MATERIAL IS A RECYCLABLE POLYETHEYLENE. IT IS ROTATIONALLY MOLDED TO A THICKNESS OF APPROXIMATLY 6mm

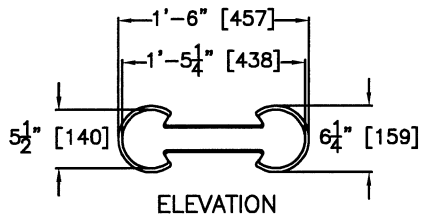
ULTRAVIOLET LIGHT: AN ULTRAVIOLET LIGHT INHIBITOR IS INTRODUCED INTO THE RAW MATERIAL MIX TO PROVIDE SUFFICIENT PROTECTION TO ENSURE REASONABLE LIFE OF THE PRODUCT IN REASONABLE WEATHER CONDITIONS.

COLORS: THE STANDARD COLORS OF THE 2001M ARE OPAQUE IVORY AND ORANGE. OTHER COLORS MAY BE INTRODUCED FROM TIME TO TIME AS REQUIRED TO COMPLY WITH STATE AND FEDERAL REGULATIONS.

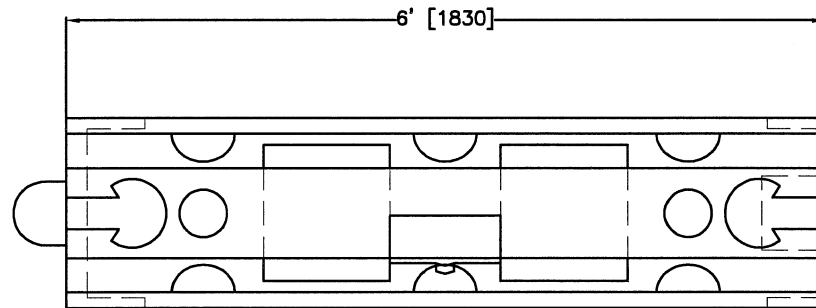
INSTALLATION: EACH UNIT SHALL WEIGH APPROXIMATLY 75 POUNDS EMPTY AND UP TO APPROXIMATLY 750 POUNDS WHEN WATER FILLED. WHEN INSTALLED AS A LONGITUDINAL CHANELIZER, THE UNITS CAN BE INTERLOCKED END TO END AT BOTTOM WITH FEMALE INDENTATION AND MALE CONNECTION, AND AT TOP WITH LOCKING COUPLING DEVICE AND BALLASTED. WHEN INSTALLED AS A WORK ZONE SAFETY DEVICE OR ROAD CLOSURE THE UNITS MAYBE USED EMPTY, BALLASTED, OR COMPLETELY FILLED WITH WATER. WARNING FLAGS, STEADY BURNING LIGHTS OR FLASHING LIGHTS CAN BE SECURELY MOUNTED TO EACH UNIT IF CONDITIONS REQUIRE. WHEN USED TO REPLACE CONCRETE BARRIER, THE MODEL 2001M MUST BE ACCESSORIZED WITH THE YODOCK 350 BARRIER WALL KIT.



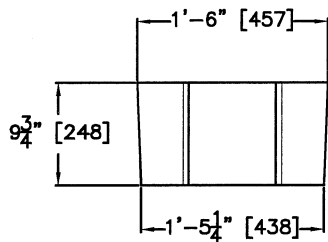
PLAN



ELEVATION



ELEVATION



PLAN
COUPLER

DETAIL 1

Yodock Wall Company, Inc.				
Revisions			YODOCK MODEL 2001M	
No.	Date	By	Date	Drawn By
1.			01/02	BAS
2.				
3.				
4.				
5.				
			Scale	Sheet No.
			NTS	2 of 9