

New
Reboundable
Bollard



Assembly Instruction



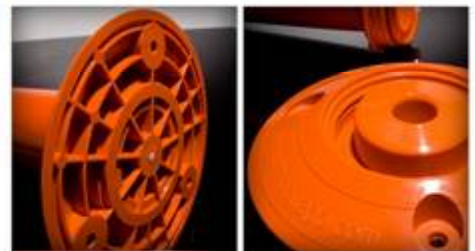
1
 Insert PU post on bottom part



2
 Cover Assembly component



3
 Tighten Assembly component

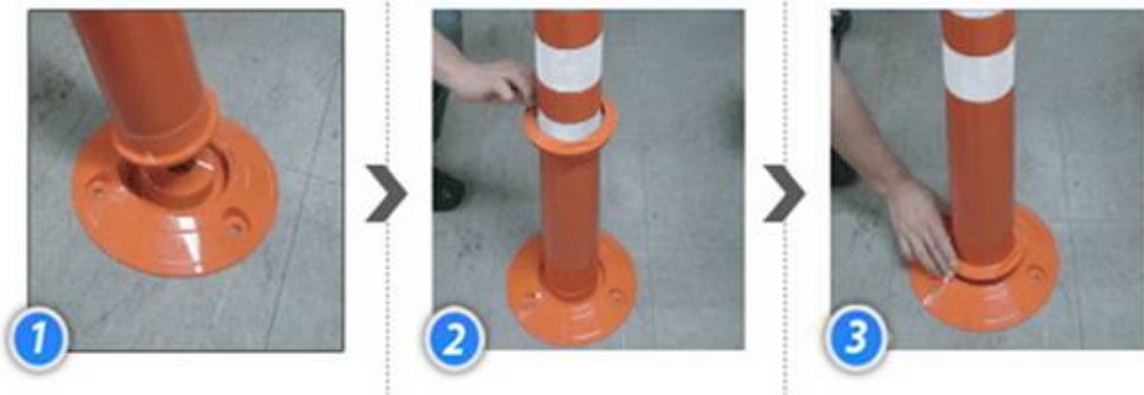


**Bolt down installation base with replaceable flexible post top
 Saves Time and Money in Replacement**

Ordering Info

- FBS750C 750mm Orange Reboundable Bollard (250x80x750) Complete
- FBS450C 450mm Orange Reboundable Bollard (250x80x450) Complete
- FBS750T 750mm Orange Reboundable Bollard (250x80x750) Post Only
- FBS450T 450mm Orange Reboundable Bollard (250x80x450) Post Only
- FBS250B 250mm Orange Reboundable Bollard Base Only

For More Info Call: 1300 794 397 www.durapost.com.au



Installation Instructions;

1. Locate into position
2. Bolt down base with 3 masonry anchors
3. Insert Post Top into base
4. Slide locking collar over Post Top and tighten into base
5. Installation Complete

For More Info Call: 1300 794 397 www.durapost.com.au